

Community Health Needs Assessment Survey Results

Jackson General Hospital

May, 2015

For additional information regarding the Jackson General Hospital Community Health Needs Assessment, contact the Jackson General Hospital Administration at (304) 372-2731

EXECUTIVE SUMMARY

In 2015, Jackson General Hospital joined community healthcare providers and community leaders to provide a Community Health Needs Assessment for its primary service areas. The assessment was provided to meet the requirements of The Patient Protection and Affordable Care Act (PPACA) for all not-for-profit 501(c) (3) hospitals.

A part of this requirement is that an assessment take place at least every three years; that the hospital adopt an implementation strategy to meet needs identified through the assessment; that the hospital include persons “representing the broad interests of the community served by the hospital facility,” including those “with special knowledge of or expertise in public health;” and that the assessment is made widely available to the public.

Jackson General Hospital will utilize this assessment as a guide to providing programs intended to address needs identified in the project. The survey design, analysis, and findings are provided in this report.

JACKSON GENERAL HOSPITAL

Mission: The mission of Jackson General Hospital is saving lives, changing lives with quality healthcare one family at a time.

Vision: The vision of Jackson General Hospital is through excellence to be the healthcare provider of choice for our community.

ACKNOWLEDGEMENTS

Stephanie McCoy, Jackson General Hospital CEO and Denise Toler, Jackson General Hospital Marketing Specialist; Susan Hosaflook and Stephanie DeWeese, Jackson County Health Department, Rob Dudley, Westbrook, River Valley Health Associations, Jackson County Chamber of Commerce, Ripley Rotary, Ravenswood Development Authority, Jackson County Family Resource Network. local private health providers.

Table of Contents

EXECUTIVE SUMMARY	2
JACKSON GENERAL HOSPITAL.....	2
ACKNOWLEDGEMENTS	2
BACKGROUND INFORMATION	4
SCOPE OF THE STUDY.....	4
METHODOLOGY	5
POPULATION DATA	5
BEHAVIORAL RISK FACTOR DATA.....	8
COUNTY HEALTH RANKINGS.....	10
HEALTH BEHAVIORS.....	11
HEALTH OUTCOMES.....	14
CONCLUSION.....	32
SURVEY RESULTS	33
APPENDIX I	40
REFERENCES	48

BACKGROUND INFORMATION

Jackson General Hospital is a Critical Access Hospital. The Medicare Rural Hospital Flexibility Program (Flex Program), created by Congress in 1997, allows small hospitals to be licensed as Critical Access Hospital and offers grants to States to help implement initiatives to strengthen the rural healthcare infrastructure.

Critical Access Hospital (CAH) Designation

A Medicare participating hospital must meet the following criteria to be designated as a CAH:

- Be located in a State that has established a State rural health plan for the State Flex;
- Be located in a rural area or be treated as rural under a special provision that allows qualified hospital providers in urban areas to be treated as rural for purposes of becoming a CAH;
- Demonstrate compliance with the Conditions of Participation (CoP) found at 42 CFR Part 485 Sub-part F at the time of application for CAH status;
- Furnish 24-hour emergency care services 7 days a week, using either on-site or on-call staff;
- Provide no more than 25 inpatient beds that can be used for either inpatient or swing bed services; however, it may also operate a distinct part rehabilitation or psychiatric unit, each with up to 10 beds;
- Have an average annual length of stay of 96 hours or less per patient for acute care (excluding swing bed services and beds that are within distinct part units); and
- Be located either more than a 35-mile drive from the nearest hospital or CAH or a 15-mile drive in areas with mountainous terrain or only secondary roads OR certified as a CAH prior to January 1, 2006, based on State designation as a “necessary provider” of health care services to residents in the area.

Jackson General Hospital: Mission Vision, and Values

It is the mission of Jackson General Hospital to continuously improve the quality of health in the communities we serve.

The vision of Jackson General Hospital is to build lifelong relationships that promote healthier, more productive lives and lifestyles.

The employee family of Jackson General Hospital supports and upholds the following beliefs as the basis for our relationships with co-workers and how we serve others:

- ❖ **P – Pursuit of excellence**
- ❖ **R – Respect patient and family needs**
- ❖ **I – Integrity throughout**
- ❖ **D – Deliver quality care**
- ❖ **E – Expect safety**

SCOPE OF THE STUDY

The purpose of the 2015 Jackson General Hospital Community Health Needs Assessment is to collect data on specific information regarding community perception of the Use of Healthcare Services, Awareness of Services, Community Health, and Health Insurance. Additionally, data were collected

regarding the demographics of survey responders. The data are presented in a format that can be useful to Jackson General Hospital administration, health care providers and community.

METHODOLOGY

A comprehensive survey was developed by the National Center for Rural Health Works and modified for this study. Jackson General Hospital CEO Stephanie McCoy approved the survey design and content.

A survey cover letter with survey was sent to 1000 community members in Jackson County. Invites via internet and social media were also forwarded to a diverse population of Jackson Countians.

Altogether, 366 completed surveys were completed and the data was entered into a Survey Monkey database. The results are presented in the Survey Results section of this report.

Introduction

POPULATION DATA

Secondary data was collected to assess the effect of the population profile on health care services utilization and to assist in planning for future needs of the community. Secondary data is defined as data previously collected for other purposes or general information. This section describes the characteristics of the population and provides an inventory of the health services that are currently available in the communities.


The secondary data section is comprised of:

- Demographic Indicators
- Behavioral Risk Statistics
 - Health Rankings
- Health Statistics
 - Health Behaviors
 - Health Outcomes
- Community Health Services Inventory

Jackson County, West Virginia Facts

People Quick Facts	Jackson County	West Virginia
Population, 2014 estimate	29,126	1,850,326
Population, 2013 estimate	29,187	1,853,595
Population, 2010 (April 1) estimates base	29,211	1,853,033
Population, percent change - April 1, 2010 to July 1, 2014	-0.3%	-0.1%
Population, percent change - April 1, 2010 to July 1, 2013	-0.1%	Z
Population, 2010	29,211	1,852,994
Persons under 5 years, percent, 2013	5.4%	5.5%
Persons under 18 years, percent, 2013	21.7%	20.6%
Persons 65 years and over, percent, 2013	18.7%	17.3%
Female persons, percent, 2013	50.8%	50.6%

White alone, percent, 2013 (a)	98.0%	93.8%
Black or African American alone, percent, 2013 (a)	0.5%	3.6%
American Indian and Alaska Native alone, percent, 2013 (a)	0.2%	0.2%
Asian alone, percent, 2013 (a)	0.3%	0.8%
Native Hawaiian and Other Pacific Islander alone, percent, 2013 (a)	Z	Z
Two or More Races, percent, 2013	1.0%	1.5%
Hispanic or Latino, percent, 2013 (b)	0.7%	1.4%
White alone, not Hispanic or Latino, percent, 2013	97.4%	92.7%

Living in same house 1 year & over, percent, 2009-2013	88.4%	88.1%
Foreign born persons, percent, 2009-2013	0.4%	1.4%
Language other than English spoken at home, pct age 5+, 2009-2013	1.1%	2.4%
High school graduate or higher, percent of persons age 25+, 2009-2013	84.6%	83.9%
Bachelor's degree or higher, percent of persons age 25+, 2009-2013	15.8%	18.3%
Veterans, 2009-2013	2,839	159,448
Mean travel time to work (minutes), workers age 16+, 2009-2013	30.0	25.5
Housing units, 2013	13,192	879,449
Homeownership rate, 2009-2013	77.7%	73.4%
Housing units in multi-unit structures, percent, 2009-2013	9.6%	12.0%
Median value of owner-occupied housing units, 2009-2013	\$101,800	\$98,500
Households, 2009-2013	11,459	741,390
Persons per household, 2009-2013	2.53	2.43
Per capita money income in past 12 months (2013 dollars), 2009-2013	\$22,527	\$22,966
Median household income, 2009-2013	\$40,376	\$41,043
 Persons below poverty level, percent, 2009-2013	19.0%	17.9%

Jackson General Hospital Community Needs Analysis and Action Plan

Business QuickFacts	Jackson County	West Virginia
Private nonfarm establishments, 2013	514	37,573 ¹
Private nonfarm employment, 2013	6,685	575,987 ¹
Private nonfarm employment, percent change, 2012-2013	-0.1%	-0.6% ¹
Nonemployer establishments, 2012	1,573	89,213

Total number of firms, 2007	1,967	120,381
Black-owned firms, percent, 2007	F	S
American Indian- and Alaska Native-owned firms, percent, 2007	F	S
Asian-owned firms, percent, 2007	F	1.3%
Native Hawaiian and Other Pacific Islander-owned firms, percent, 2007	F	0.0%
Hispanic-owned firms, percent, 2007	F	0.7%
Women-owned firms, percent, 2007	20.1%	28.1%

Manufacturers' shipments, 2007 (\$1000)	1,296,649	25,080,573
Merchant wholesaler sales, 2007 (\$1000)	77,382	11,036,467
Retail sales, 2007 (\$1000)	325,186	20,538,829
Retail sales per capita, 2007	\$11,504	\$11,340
Accommodation and food services sales, 2007 (\$1000)	31,817	2,553,258
Building permits, 2013	2	2,575
Geography QuickFacts	Jackson County	West Virginia
Land area in square miles, 2010	464.35	24,038.21
Persons per square mile, 2010	62.9	77.1
FIPS Code	035	54
Metropolitan or Micropolitan Statistical Area	None	

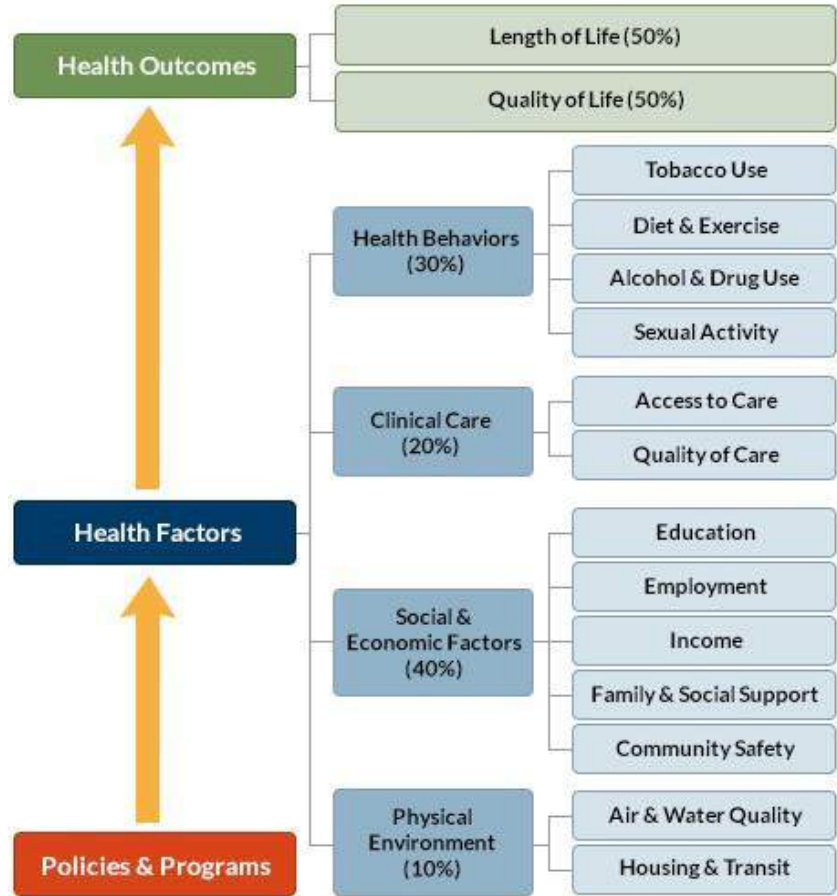
1: Includes data not distributed by county.

Behavioral Risks

The Robert Wood Johnson Foundation (RWJF) and the University of Wisconsin Population Health Institute (UWPHI) presented the 2015 West Virginia County Health Rankings document to provide a snapshot of how healthy county residents are by comparing their overall health and the factors that influence their health with other counties in the State. All of the County Health Rankings are based upon health outcomes, health factors, and programs and policies - the *County Health Rankings* illustrate what we know when it comes to what is making people sick or healthy. Their outcomes may be affected by community-based programs and policies designed to alter their distribution in the community.

WHAT ARE THE COUNTY HEALTH RANKINGS?

Published online at countyhealthrankings.org, the *Rankings* help counties understand what influences how healthy residents are and how long they will live. The *Rankings* are unique in their ability to measure the current overall health of each county in all 50 states. They also look at a variety of measures that affect the future health of communities, such as high school graduation rates, access to healthy foods, rates of smoking, obesity, and teen births. Communities use the *Rankings* to identify and garner support for local health improvement initiatives among government agencies, healthcare providers, community organizations, business leaders, policy makers, and the public.



Health outcomes rankings are based on equal weighting of mortality (length of life) and morbidity (quality of life). Mortality rank is based on a measure of premature death: the years of potential life lost prior to age 75. The morbidity rank is based on measures that represent health-related quality of life and birth outcomes. Four morbidity measures were combined – self-reported fair or poor health, poor physical health days, poor mental health days, and the percent of births with low birth weight. Jackson County ranked 28th in mortality and 29th in morbidity.

Jackson County ranked in the mid category (29-41 out of 55 total counties) for both health outcomes (ranked 30th) and health factors (ranked 36th). For health factors rankings, Jackson County ranked 41st in health behaviors, 39th in clinical care, 26th in social and economic factors, and 14th for physical environment.

Jackson General Hospital Community Needs Analysis and Action Plan

Healthy People 2020 are the product of an extensive stakeholder feedback process that is unparalleled in government and health. It integrates input from public health and prevention experts, a wide range of federal, state and local government officials, a consortium of more than 2,000 organizations, and perhaps most importantly, the public. More than 8,000 comments were considered in drafting a comprehensive set of Healthy People 2020 objectives. Based on this input, a number of new topic areas are included in the new initiative, including: Adolescent Health, Blood Disorders and Blood Safety, Dementias, including Alzheimer's Disease, Early and Middle Childhood, Genomics, Global Health, Health-Related Quality of Life and Well-Being, Healthcare-Associated Infections, Lesbian, Gay, Bisexual and Transgender Health, Older Adults, Preparedness, Sleep, Health Social Determinants of Health. Healthy People are also issuing a special challenge to encourage developers to create easy-to-use applications for professionals who are working with the new national health objectives and state- and community-level health data.

Jackson General Hospital Community Needs Analysis and Action Plan

2015 COUNTY HEALTH RANKINGS: MEASURES AND NATIONAL/STATE

Measure	Description	US Median	State WV	Jackson County WV
HEALTH OUTCOMES				
Premature death	Years of potential life lost before age 75 per 100,000 population	7681	9587	8859
Poor or fair health	% of adults reporting fair or poor health	17%	22%	21%
Poor physical health days	Average # of physically unhealthy days reported in past 30 days	3.7	4.9	5.2
Poor mental health days	Average # of mentally unhealthy days reported in past 30 days	3.5	4.4	3.8
Low birth weight	% of live births with low birth weight (< 2500 grams)	8%	9.4%	7.9%
HEALTH FACTORS				
HEALTH BEHAVIORS				
Adult smoking	% of adults who are current smokers	21%	26%	24%
Adult obesity	% of adults that report a BMI ≥ 30	31%	33%	33%
Food environment index	Index of factors that contribute to a healthy food environment, (0-10)	7.3	7.3	7.6
Physical inactivity	% of adults aged 20 and over reporting no leisure-time physical activity	27%	32%	30%
Access to exercise opportunities	% of population with adequate access to locations for physical activity	65%	60%	42%
Excessive drinking	% of adults reporting binge or heavy drinking	16%	10%	11%
Alcohol-impaired driving deaths	% of driving deaths with alcohol involvement	31%	34%	17%
Sexually transmitted infections	# of newly diagnosed chlamydia cases per 100,000 population	291	258	30
Teen births	# of births per 1,000 female population ages 15-19	41	45	37
CLINICAL CARE				
Uninsured	% of population under age 65 without health insurance	17%	18%	17%
Primary care physicians	Ratio of population to primary care physicians	2015:1	1299:1	2658:1
Dentists	Ratio of population to dentists	2670:1	2065:1	2653:1
Mental health providers	Ratio of population to mental health providers	1128:1	963:1	3647:1
Preventable hospital stays	# of hospital stays for ambulatory-care sensitive conditions per 1,000 Medicare enrollees	65.3	93	96
Diabetic monitoring	% of diabetic Medicare enrollees ages 65-75 that receive HbA1c monitoring	85%	84%	86%
Mammography screening	% of female Medicare enrollees ages 67-69 that receive mammography screening	61%	58.3%	59.2%
SOCIAL AND ECONOMIC FACTORS				
High school graduation	% of ninth-grade cohort that graduates in four years	85%	79%	82%
Some college	% of adults ages 25-44 with some post-secondary education	56%	52.9%	55.4%
Unemployment	% of population aged 16 and older unemployed but seeking work	7%	6.5%	7.2%
Children in poverty	% of children under age 18 in poverty	24%	26%	26%
Income inequality	Ratio of household income at the 80th percentile to income at the 20th percentile	4.4	4.9	4.6
Children in single-parent households	% of children that live in a household headed by single parent	31%	32%	32%
Social associations	# of membership associations per 10,000 population	12.6	13.3	10.6
Violent crime	# of reported violent crime offenses per 100,000 population	199	311	18
Injury deaths	# of deaths due to injury per 100,000 population	73.8	91	108
PHYSICAL ENVIRONMENT				
Air pollution – particulate matter	Average daily density of fine particulate matter in micrograms per cubic meter (PM2.5)	11.9	13.2	13.2
Drinking water violations	% of population potentially exposed to water exceeding a violation limit during the past year	1.0%	3%	19%
Severe housing problems	% of households with overcrowding, high housing costs, or lack of kitchen or plumbing facilities	14%	11%	9%
Driving alone to work	% of workforce that drives alone to work	80%	82%	84%
Long commute – driving alone	Among workers who commute in their car alone, % commuting > 30 minutes	29%	32%	46%

Health Behaviors

Health behaviors such as poor diet, a lack of exercise, and substance abuse contribute to poor health status.

Data Indicators

Physical Inactivity	Alcohol Consumption	Tobacco Usage - Quit Attempt
Fruit/Vegetable Consumption	Alcohol Expenditures	Tobacco Expenditures
Fruit/Vegetable Expenditures	Tobacco Usage - Current Smokers	
Soda Expenditures	Tobacco Usage - Former or Current Smokers	

Physical Inactivity

Within the report area, 6,801 or 29.1% of adults aged 20 and older self-report no leisure time for activity, based on the question: "During the past month, other than your regular job, did you participate in any physical activities or exercises such as running, calisthenics, golf, gardening, or walking for exercise?". This indicator is relevant because current behaviors are determinants of future health and this indicator may illustrate a cause of significant health issues, such as obesity and poor cardiovascular health.

Report Area	Total Population Age 20	Population with no Leisure Time Physical Activity	Percent Population with no Leisure Time Physical Activity
Jackson County, WV	22,153	6,801	29.1%
West Virginia	1,425,360	455,640	30.69%
United States	231,341,061	53,415,737	22.64%

Percent Population with no Leisure Time Physical Activity



- Jackson County, WV (29.1%)
- West Virginia (30.69%)
- United States (22.64%)

Note: This indicator is compared with the state average.

Data Source: Centers for Disease Control and Prevention, [National Center for Chronic Disease Prevention and Health Promotion](#). 2012. Source geography: County

Adults with No Leisure-Time Physical Activity by Gender

Report Area	Total Males with No Leisure-Time Physical Activity	Percent Males with No Leisure-Time Physical Activity	Total Females with No Leisure-Time Physical Activity	Percent Females with No Leisure-Time Physical Activity
Jackson County, WV	3,037	27.2%	3,764	30.8%
West Virginia	202,417	28.23%	253,236	32.93%
United States	24,071,561	21.2%	29,344,293	23.94%

Percent Adults Physically Inactive by Year, 2004 through 2012

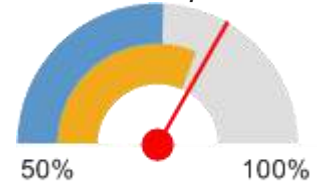
Report Area	2004	2005	2006	2007	2008	2009	2010	2011	2012
Jackson County, WV	28.4%	26.3%	30.5%	30.6%	32.8%	28.7%	29.6%	28.1%	29.1%
West Virginia	26.55%	25.81%	27.03%	28.21%	30.4%	31.54%	32.55%	31.22%	30.69%
United States	22.96%	22.82%	22.93%	23.2%	23.51%	23.67%	23.41%	22.47%	22.64%

Fruit/Vegetable Consumption

In the report area an estimated 18,122, or 83.3% of adults over the age of 18 are consuming less than 5 servings of fruits and vegetables each day. This indicator is relevant because current behaviors are determinants of future health, and because unhealthy eating habits may cause of significant health issues, such as obesity and diabetes.

Report Area	Total Population (Age 18)	Total Adults with Inadequate Fruit / Vegetable Consumption	Percent Adults with Inadequate Fruit / Vegetable Consumption
Jackson County, WV	21,755	18,122	83.3%
West Virginia	1,424,575	1,159,604	81.4%
United States	227,279,010	171,972,118	75.67%

Percent Adults with Inadequate Fruit / Vegetable Consumption



- Jackson County, WV (83.3%)
- West Virginia (81.4%)
- United States (75.67%)

*Note: This indicator is compared with the state average.
Data Source: Centers for Disease Control and Prevention, [Behavioral Risk Factor Surveillance System](#). Accessed via the [Health Indicators Warehouse](#). US Department of Health & Human Services, [Health Indicators Warehouse](#). 2005-09. Source geography: County*

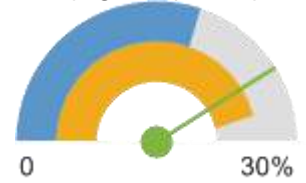
Tobacco Usage - Current Smokers

In the report area an estimated 5,450, or 24.2% of adults age 18 or older self-report currently smoking cigarettes some days or every day. This indicator is relevant because tobacco use is linked to leading causes of death such as cancer and cardiovascular disease.

Jackson General Hospital Community Needs Analysis and Action Plan

Report Area	Total Population Age 18	Total Adults Regularly Smoking Cigarettes	Percent Population Smoking Cigarettes (Crude)	Percent Population Smoking Cigarettes (Age-Adjusted)
Jackson County, WV	22,520	5,450	24.2%	24.7%
West Virginia	1,458,378	379,178	26%	27.6%
United States	232,556,016	41,491,223	17.84%	18.08%

Percent Population Smoking Cigarettes (Age-Adjusted)



- Jackson County, WV (24.7%)
- West Virginia (27.6%)
- United States (18.08%)

Note: This indicator is compared with the state average.

Data Source: Centers for Disease Control and Prevention, [Behavioral Risk Factor Surveillance System](#). Accessed via the [Health Indicators Warehouse](#). US Department of Health & Human Services, [Health Indicators Warehouse](#). 2006-12. Source geography: County

Alcohol Consumption

This indicator reports the percentage of adults aged 18 and older who self-report heavy alcohol consumption (defined as more than two drinks per day on average for men and one drink per day on average for women). This indicator is relevant because current behaviors are determinants of future health and this indicator may illustrate a cause of significant health issues, such as cirrhosis, cancers, and untreated mental and behavioral health needs

Report Area	Total Population Age 18	Estimated Adults Drinking Excessively	Estimated Adults Drinking Excessively (Crude Percentage)	Estimated Adults Drinking Excessively (Age-Adjusted Percentage)
Jackson County, WV	22,520	2,365	10.5%	11.8%
West Virginia	1,458,378	145,838	10%	11%
United States	232,556,016	38,248,349	16.45%	16.94%

Estimated Adults Drinking Excessively (Age-Adjusted Percentage)



- Jackson County, WV (11.8%)
- West Virginia (11%)
- United States (16.94%)

Note: This indicator is compared with the state average.

Data Source: Centers for Disease Control and Prevention, [Behavioral Risk Factor Surveillance System](#). Accessed via the [Health Indicators Warehouse](#). US Department of Health & Human Services, [Health Indicators Warehouse](#). 2006-12. Source geography: County

Jackson General Hospital Community Needs Analysis and Action Plan

Tobacco Usage - Former or Current Smokers

In the report area, an estimated 9,940 adults, or 53.90%, report ever smoking 100 or more cigarettes. This indicator is relevant because tobacco use is linked to leading causes of death such as cancer and cardiovascular disease.

Report Area	Survey Population (Adults Age 18)	Total Adults Ever Smoking 100 or More Cigarettes	Percent Adults Ever Smoking 100 or More Cigarettes
Jackson County, WV	18,441	9,940	53.90%
West Virginia	1,458,411	769,676	52.77%
United States	235,151,778	103,842,020	44.16%

Percent Adults Ever Smoking 100 or More Cigarettes



■ Jackson County, WV (53.90%)
■ West Virginia (52.77%)
■ United States (44.16%)

Note: This indicator is compared with the state average.

Data Source: Centers for Disease Control and Prevention, [Behavioral Risk Factor Surveillance System](#). Additional data analysis by [CARES](#). 2011-12. Source geography: County

Tobacco Usage - Quit Attempt

An estimated 40.89% of adult smokers in the report area attempted to quit smoking for at least 1 day in the past year. This indicator is relevant because tobacco use is linked to leading causes of death such as cancer and cardiovascular disease and supporting efforts to quit smoking may increase positive health outcomes.

Report Area	Survey Population (Smokers Age 18)	Total Smokers with Quit Attempt in Past 12 Months	Percent Smokers with Quit Attempt in Past 12 Months
Jackson County, WV	5,547	2,268	40.89%
West Virginia	412,688	214,651	52.01%
United States	45,526,654	27,323,073	60.02%

Percent Smokers with Quit Attempt in Past 12 Months



■ Jackson County, WV (40.89%)
■ West Virginia (52.01%)
■ United States (60.02%)

Note: This indicator is compared with the state average.

Data Source: Centers for Disease Control and Prevention, [Behavioral Risk Factor Surveillance System](#). Additional data analysis by [CARES](#). 2011-12. Source geography: County

Please see [Health Indicators Report footnotes](#) for information about the data background, analysis methodologies and other related notes.

Report prepared by [Community Commons](#), May, 2015.

Health Outcomes

Measuring morbidity and mortality rates allows assessing linkages between social determinants of health and outcomes. By comparing, for example, the prevalence of certain chronic diseases to indicators in other categories (e.g., poor diet and exercise) with outcomes (e.g., high rates of obesity and diabetes), various causal relationship may emerge, allowing a better understanding of how certain community health needs may be addressed.

Data Indicators		
Depression (Medicare Population)	Poor Dental Health	Mortality - Cancer
Diabetes (Adult)	Poor General Health	Mortality - Heart Disease
Diabetes (Medicare Population)	Chlamydia Incidence	Mortality - Ischemic Heart Disease
High Cholesterol (Adult)	Gonorrhea Incidence	Mortality - Lung Disease
Heart Disease (Adult)	HIV Prevalence	Mortality - Stroke
Heart Disease (Medicare Population)	Cancer Incidence - Breast	Mortality - Unintentional Injury
High Blood Pressure (Adult)	Cancer Incidence - Cervical	Mortality - Motor Vehicle Accident
High Blood Pressure (Medicare Population)	Cancer Incidence - Colon and Rectum	Mortality - Pedestrian Accident
High Cholesterol (Medicare Population)	Cancer Incidence - Lung	Mortality - Homicide
Overweight	Cancer Incidence - Prostate	Mortality - Suicide
Obesity	Low Birth Weight	Infant Mortality
Asthma Prevalence	Mortality - Premature Death	

Depression (Medicare Population)

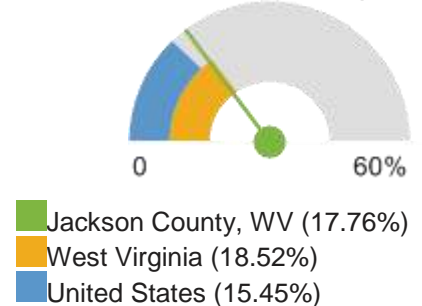
This indicator reports the percentage of the Medicare fee-for-service population with depression.

Report Area	Total Medicare Beneficiaries	Beneficiaries with Depression	Percent with Depression
Jackson County, WV	5,390	957	17.76%
West Virginia	295,111	54,655	18.52%
United States	34,126,305	5,271,176	15.45%

Note: This indicator is compared with the state average.

Data Source: [Centers for Medicare and Medicaid Services](#). 2012. Source geography: County

Percentage of Medicare Beneficiaries with Depression



Jackson General Hospital Community Needs Analysis and Action Plan

Diabetes (Adult)

This indicator reports the percentage of adults aged 20 and older who have ever been told by a doctor that they have diabetes. This indicator is relevant because diabetes is a prevalent problem in the U.S.; it may indicate an unhealthy lifestyle and puts individuals at risk for further health issues.

Report Area	Total Population Age 20	Population with Diagnosed Diabetes	Population with Diagnosed Diabetes, Crude Rate	Population with Diagnosed Diabetes, Age-Adjusted Rate
Jackson County, WV	22,252	2,826	12.7	10.6%
West Virginia	1,426,243	187,432	13.14	11.39%
United States	234,058,710	23,059,940	9.85	9.11%

Percent Adults with Diagnosed Diabetes (Age-Adjusted)



- Jackson County, WV (10.6%)
- West Virginia (11.39%)
- United States (9.11%)

Note: This indicator is compared with the state average.

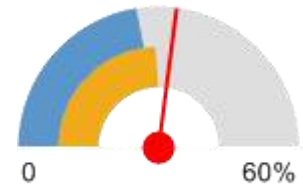
Data Source: Centers for Disease Control and Prevention, [National Center for Chronic Disease Prevention and Health Promotion](#). 2012. Source geography: County

Diabetes (Medicare Population)

This indicator reports the percentage of the Medicare fee-for-service population with diabetes.

Report Area	Total Medicare Beneficiaries	Beneficiaries with Diabetes	Percent with Diabetes
Jackson County, WV	5,390	1,745	32.37%
West Virginia	295,111	87,294	29.58%
United States	34,126,305	9,224,278	27.03%

Percentage of Medicare Beneficiaries with Diabetes



- Jackson County, WV (32.37%)
- West Virginia (29.58%)
- United States (27.03%)

Note: This indicator is compared with the state average.

Data Source: [Centers for Medicare and Medicaid Services](#). 2012. Source geography: County

High Cholesterol (Adult)

This indicator reports the percentage of adults aged 18 and older who self-report that they have ever been told by a doctor, nurse, or other health professional that they had high blood cholesterol.

Report Area	Survey Population (Adults Age 18)	Total Adults with High Cholesterol	Percent Adults with High Cholesterol
Jackson County, WV	16,422	7,880	47.98%
West Virginia	1,163,149	471,265	40.52%
United States	180,861,326	69,662,357	38.52%

Percent Adults with High Cholesterol



- Jackson County, WV (47.98%)
- West Virginia (40.52%)
- United States (38.52%)

Note: This indicator is compared with the state average.

Data Source: Centers for Disease Control and Prevention, [Behavioral Risk Factor Surveillance System](#). Additional data analysis by [CARES](#). 2011-12. Source geography: County

Jackson General Hospital Community Needs Analysis and Action Plan

Heart Disease (Adult)

1,129, or 6.15% of adults aged 18 and older have ever been told by a doctor that they have coronary heart disease or angina. This indicator is relevant because coronary heart disease is a leading cause of death in the U.S. and is also related to high blood pressure, high cholesterol, and heart attacks.

Report Area	Survey Population (Adults Age 18)	Total Adults with Heart Disease	Percent Adults with Heart Disease
Jackson County, WV	18,344	1,129	6.15%
West Virginia	1,450,446	110,104	7.59%
United States	236,406,904	10,407,185	4.40%

Percent Adults with Heart Disease



- Jackson County, WV (6.15%)
- West Virginia (7.59%)
- United States (4.40%)

Note: This indicator is compared with the state average.

Data Source: Centers for Disease Control and Prevention, [Behavioral Risk Factor Surveillance System](#). Additional data analysis by [CARES](#). 2011-12. Source geography: County

Heart Disease (Medicare Population)

This indicator reports the percentage of the Medicare fee-for-service population with ischemic heart disease.

Report Area	Total Medicare Beneficiaries	Beneficiaries with Heart Disease	Percent with Heart Disease
Jackson County, WV	5,390	1,668	30.95%
West Virginia	295,111	90,407	30.63%
United States	34,126,305	9,744,058	28.55%

Percentage of Medicare Beneficiaries with Heart Disease



- Jackson County, WV (30.95%)
- West Virginia (30.63%)
- United States (28.55%)

Note: This indicator is compared with the state average.

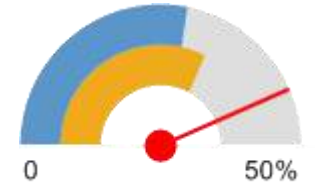
Data Source: [Centers for Medicare and Medicaid Services](#). 2012. Source geography: County

High Blood Pressure (Adult)

9,796, or 43.5% of adults aged 18 and older have ever been told by a doctor that they have high blood pressure or hypertension.

Report Area	Total Population (Age 18)	Total Adults with High Blood Pressure	Percent Adults with High Blood Pressure
Jackson County, WV	22,520	9,796	43.5%
West Virginia	1,458,378	473,973	32.5%
United States	232,556,016	65,476,522	28.16%

Percent Adults with High Blood Pressure



- Jackson County, WV (43.5%)
- West Virginia (32.5%)
- United States (28.16%)

Note: This indicator is compared with the state average.

Data Source: Centers for Disease Control and Prevention, [Behavioral Risk Factor Surveillance System](#). Additional data analysis by [CARES](#). 2006-12. Source geography: County

High Blood Pressure (Medicare Population)

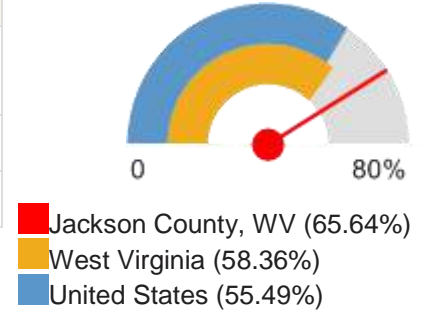
This indicator reports the percentage of the Medicare fee-for-service population with hypertension (high blood pressure).

Report Area	Total Medicare Beneficiaries	Beneficiaries with High Blood Pressure	Percent with High Blood Pressure
Jackson County, WV	5,390	3,538	65.64%
West Virginia	295,111	172,218	58.36%
United States	34,126,305	18,936,118	55.49%

Note: This indicator is compared with the state average.

Data Source: [Centers for Medicare and Medicaid Services](#). 2012. Source geography: County

Percentage of Medicare Beneficiaries with High Blood Pressure



High Cholesterol (Medicare Population)

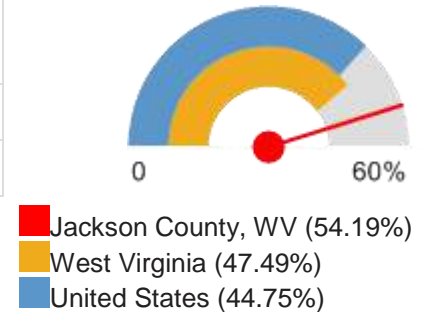
This indicator reports the percentage of the Medicare fee-for-service population with hyperlipidemia, which is typically associated with high cholesterol.

Report Area	Total Medicare Beneficiaries	Beneficiaries with High Cholesterol	Percent with High Cholesterol
Jackson County, WV	5,390	2,921	54.19%
West Virginia	295,111	140,148	47.49%
United States	34,126,305	15,273,052	44.75%

Note: This indicator is compared with the state average.

Data Source: [Centers for Medicare and Medicaid Services](#). 2012. Source geography: County

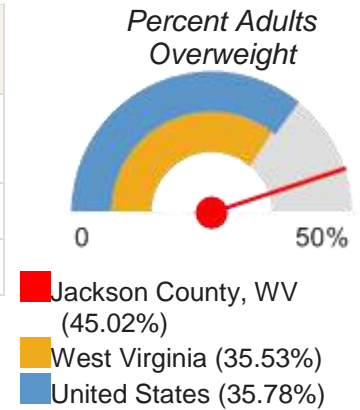
Percentage of Medicare Beneficiaries with High Cholesterol



Overweight

45.02% of adults aged 18 and older self-report that they have a Body Mass Index (BMI) between 25.0 and 30.0 (overweight) in the report area. Excess weight may indicate an unhealthy lifestyle and puts individuals at risk for further health issues.

Report Area	Survey Population (Adults Age 18)	Total Adults Overweight	Percent Adults Overweight
Jackson County, WV	17,785	8,006	45.02%
West Virginia	1,384,791	492,077	35.53%
United States	224,991,207	80,499,532	35.78%



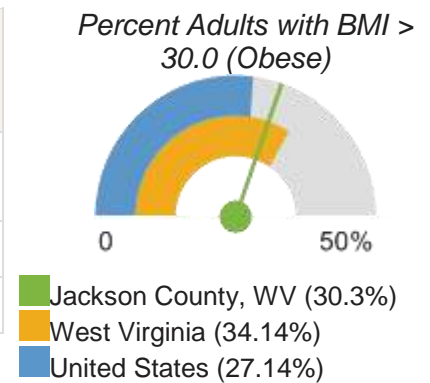
Note: This indicator is compared with the state average.

Data Source: Centers for Disease Control and Prevention, [Behavioral Risk Factor Surveillance System](#). Additional data analysis by [CARES](#). 2011-12. Source geography: County

Obesity

30.3% of adults aged 20 and older self-report that they have a Body Mass Index (BMI) greater than 30.0 (obese) in the report area. Excess weight may indicate an unhealthy lifestyle and puts individuals at risk for further health issues.

Report Area	Total Population Age 20	Adults with BMI > 30.0 (Obese)	Percent Adults with BMI > 30.0 (Obese)
Jackson County, WV	22,200	6,771	30.3%
West Virginia	1,425,485	486,372	34.14%
United States	231,417,834	63,336,403	27.14%



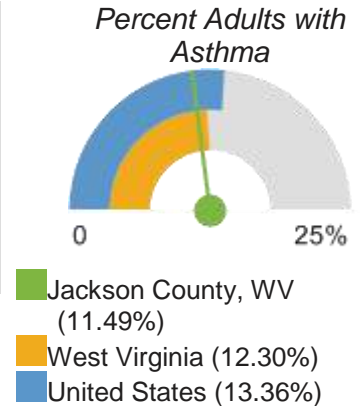
Note: This indicator is compared with the state average.

Data Source: Centers for Disease Control and Prevention, [National Center for Chronic Disease Prevention and Health Promotion](#). 2012. Source geography: County

Asthma Prevalence

This indicator reports the percentage of adults aged 18 and older who self-report that they have ever been told by a doctor, nurse, or other health professional that they had asthma. This indicator is relevant because asthma is a prevalent problem in the U.S. that is often exacerbated by poor environmental conditions.

Report Area	Survey Population (Adults Age 18)	Total Adults with Asthma	Percent Adults with Asthma
Jackson County, WV	18,192	2,091	11.49%
West Virginia	1,458,945	179,485	12.30%
United States	237,197,465	31,697,608	13.36%

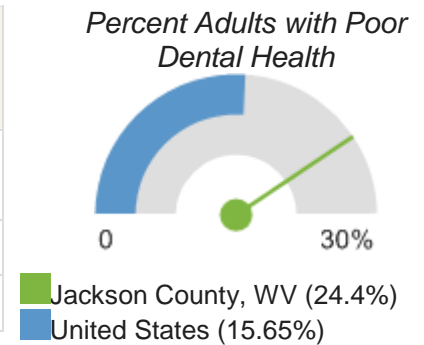


Note: This indicator is compared with the state average.
 Data Source: Centers for Disease Control and Prevention, [Behavioral Risk Factor Surveillance System](#). Additional data analysis by [CARES](#). 2011-12. Source geography: County

Poor Dental Health

This indicator reports the percentage of adults age 18 and older who self-report that six or more of their permanent teeth have been removed due to tooth decay, gum disease, or infection. This indicator is relevant because it indicates lack of access to dental care and/or social barriers to utilization of dental services.

Report Area	Total Population (Age 18)	Total Adults with Poor Dental Health	Percent Adults with Poor Dental Health
Jackson County, WV	22,437	5,475	24.4%
West Virginia	1,458,378	448,343	30.74%
United States	235,375,690	36,842,620	15.65%



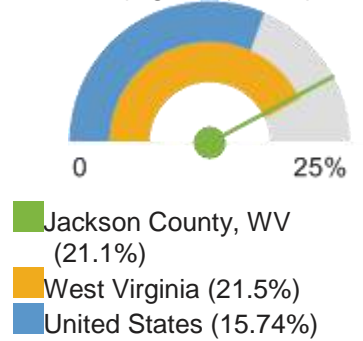
Note: This indicator is compared with the state average.
 Data Source: Centers for Disease Control and Prevention, [Behavioral Risk Factor Surveillance System](#). Additional data analysis by [CARES](#). 2006-10. Source geography: County

Poor General Health

Within the report area 23% of adults age 18 and older self-report having poor or fair health in response to the question "Would you say that in general your health is excellent, very good, good, fair, or poor?". This indicator is relevant because it is a measure of general poor health status.

Report Area	Total Population Age 18	Estimated Population with Poor or Fair Health	Crude Percentage	Age-Adjusted Percentage
Jackson County, WV	22,520	5,180	23%	21.1%
West Virginia	1,458,378	344,177	23.6%	21.5%
United States	232,556,016	37,766,703	16.24%	15.74%

Percent Adults with Poor or Fair Health (Age-Adjusted)



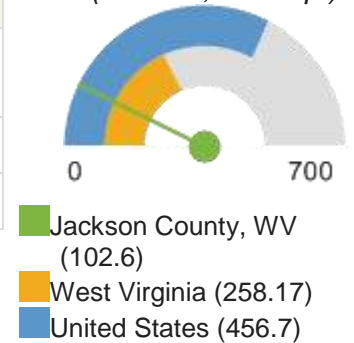
Note: This indicator is compared with the state average.
 Data Source: Centers for Disease Control and Prevention, [Behavioral Risk Factor Surveillance System](#). Accessed via the [Health Indicators Warehouse](#). US Department of Health & Human Services, [Health Indicators Warehouse](#). 2006-12. Source geography: County

Chlamydia Incidence

This indicator reports incidence rate of chlamydia cases per 100,000 population. This indicator is relevant because it is a measure of poor health status and indicates the prevalence of unsafe sex practices.

Report Area	Total Population	Total Chlamydia Infections	Chlamydia Infection Rate (Per 100,000 Pop.)
Jackson County, WV	29,241	30	102.6
West Virginia	1,855,364	4,790	258.17
United States	311,577,841	1,422,976	456.7

Chlamydia Infection Rate (Per 100,000 Pop.)



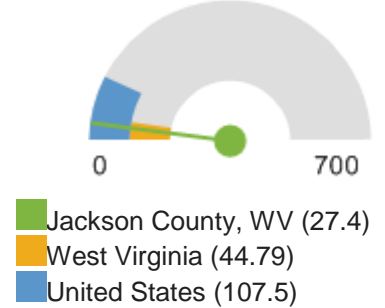
Note: This indicator is compared with the state average.
 Data Source: US Department of Health & Human Services, [Health Indicators Warehouse](#). Centers for Disease Control and Prevention, [National Center for HIV/AIDS, Viral Hepatitis, STD, and TB Prevention](#). 2012. Source geography: County

Gonorrhea Incidence

This indicator reports incidence rate of Gonorrhea cases per 100,000 population. This indicator is relevant because it is a measure of poor health status and indicates the prevalence of unsafe sex practices.

Report Area	Total Population	Total Gonorrhea Infections	Gonorrhea Infection Rate (Per 100,000 Pop.)
Jackson County, WV	29,241	8	27.4
West Virginia	1,855,364	831	44.79
United States	311,466,046	334,826	107.5

Gonorrhea Infection Rate (Per 100,000 Pop.)



Note: This indicator is compared with the state average.

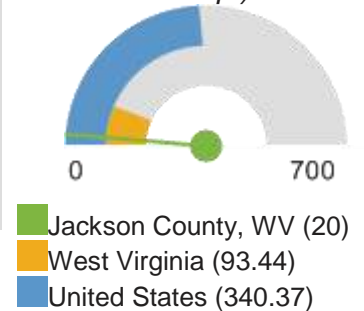
Data Source: US Department of Health & Human Services, [Health Indicators Warehouse](#). Centers for Disease Control and Prevention, [National Center for HIV/AIDS, Viral Hepatitis, STD, and TB Prevention](#). 2012. Source geography: County

HIV Prevalence

This indicator reports prevalence rate of HIV per 100,000 population. This indicator is relevant because HIV is a life-threatening communicable disease that disproportionately affects minority populations and may also indicate the prevalence of unsafe sex practices.

Report Area	Total Population	Population with HIV / AIDS	Population with HIV / AIDS, Rate (Per 100,000 Pop.)
Jackson County, WV	24,680	5	20
West Virginia	1,579,630	1,476	93.44
United States	509,288,471	1,733,459	340.37

Population with HIV / AIDS, Rate (Per 100,000 Pop.)



Note: This indicator is compared with the state average.

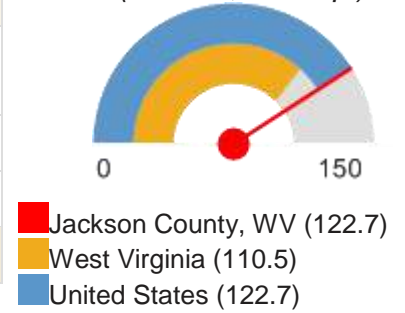
Data Source: US Department of Health & Human Services, [Health Indicators Warehouse](#). Centers for Disease Control and Prevention, [National Center for HIV/AIDS, Viral Hepatitis, STD, and TB Prevention](#). 2010. Source geography: County

Cancer Incidence - Breast

This indicator reports the age adjusted incidence rate (cases per 100,000 population per year) of females with breast cancer adjusted to 2000 U.S. standard population age groups (Under Age 1, 1-4, 5-9, ..., 80-84, 85 and older). This indicator is relevant because cancer is a leading cause of death and it is important to identify cancers separately to better target interventions.

Report Area	Female Population	Average New Cases per Year	Annual Incidence Rate (Per 100,000 Pop.)
Jackson County, WV	14,820	24	122.7
West Virginia	937,724	1,340	110.5
United States	155,863,552	216,052	122.7
HP 2020 Target			<= 40.9

Annual Breast Cancer Incidence Rate (Per 100,000 Pop.)



Note: This indicator is compared with the state average.

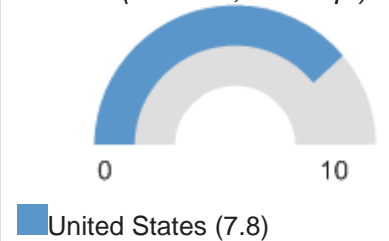
Data Source: National Institutes of Health, National Cancer Institute, [Surveillance, Epidemiology, and End Results Program](#). [State Cancer Profiles](#). 2007-11. Source geography: County

Cancer Incidence - Cervical

This indicator reports the age adjusted incidence rate (cases per 100,000 population per year) of females with cervical cancer adjusted to 2000 U.S. standard population age groups (Under age 1, 1-4, 5-9, ..., 80-84, 85 and older). This indicator is relevant because cancer is a leading cause of death and it is important to identify cancers separately to better target interventions.

Report Area	Female Population	Average New Cases per Year	Annual Incidence Rate (Per 100,000 Pop.)
Jackson County, WV	14,820	no data	no data
West Virginia	937,724	102	10.2
United States	155,863,552	12,530	7.8
HP 2020 Target			<= 7.1

Annual Cervical Cancer Incidence Rate (Per 100,000 Pop.)



Note: This indicator is compared with the state average.

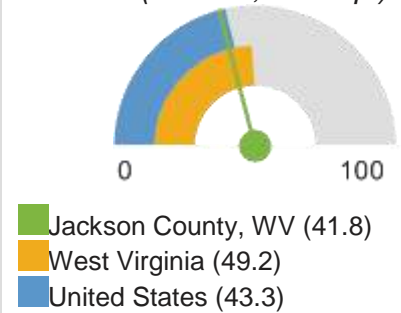
Data Source: National Institutes of Health, National Cancer Institute, [Surveillance, Epidemiology, and End Results Program](#). [State Cancer Profiles](#). 2007-11. Source geography: County

Cancer Incidence - Colon and Rectum

This indicator reports the age adjusted incidence rate (cases per 100,000 population per year) of colon and rectum cancer adjusted to 2000 U.S. standard population age groups (Under age 1, 1-4, 5-9, ..., 80-84, 85 and older). This indicator is relevant because cancer is a leading cause of death and it is important to identify cancers separately to better target interventions.

Report Area	Total Population	Average New Cases per Year	Annual Incidence Rate (Per 100,000 Pop.)
Jackson County, WV	29,161	16	41.8
West Virginia	1,846,372	1,149	49.2
United States	306,603,776	142,173	43.3
HP 2020 Target			<= 38.7

Annual Colon and Rectum Cancer Incidence Rate (Per 100,000 Pop.)



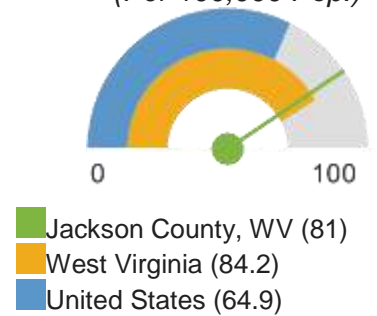
Note: This indicator is compared with the state average.
 Data Source: National Institutes of Health, National Cancer Institute, [Surveillance, Epidemiology, and End Results Program](#). [State Cancer Profiles](#). 2007-11. Source geography: County

Cancer Incidence - Lung

This indicator reports the age adjusted incidence rate (cases per 100,000 population per year) of lung cancer adjusted to 2000 U.S. standard population age groups (Under age 1, 1-4, 5-9, ..., 80-84, 85 and older). This indicator is relevant because cancer is a leading cause of death and it is important to identify cancers separately to better target interventions.

Report Area	Total Population	Average New Cases per Year	Annual Incidence Rate (Per 100,000 Pop.)
Jackson County, WV	29,161	32	81
West Virginia	1,846,372	2,011	84.2
United States	306,603,776	212,768	64.9

Annual Lung Cancer Incidence Rate (Per 100,000 Pop.)



Note: This indicator is compared with the state average.
 Data Source: National Institutes of Health, National Cancer Institute, [Surveillance, Epidemiology, and End Results Program](#). [State Cancer Profiles](#). 2007-11. Source geography: County

Cancer Incidence - Prostate

This indicator reports the age adjusted incidence rate (cases per 100,000 population per year) of males with prostate cancer adjusted to 2000 U.S. standard population age groups (Under age 1, 1-4, 5-9, ..., 80-84, 85 and older). This indicator is relevant because cancer is a leading cause of death and it is important to identify cancers separately to better target interventions.

Report Area	Male Population	Average New Cases per Year	Annual Incidence Rate (Per 100,000 Pop.)
Jackson County, WV	14,341	23	123.2
West Virginia	908,648	1,426	126.3
United States	150,740,224	220,000	142.3

Annual Prostate Cancer Incidence Rate (Per 100,000 Pop.)



- Jackson County, WV (123.2)
- West Virginia (126.3)
- United States (142.3)

Note: This indicator is compared with the state average.

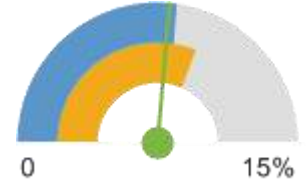
Data Source: National Institutes of Health, National Cancer Institute, [Surveillance, Epidemiology, and End Results Program](#). [State Cancer Profiles](#). 2007-11. Source geography: County

Low Birth Weight

This indicator reports the percentage of total births that are low birth weight (Under 2500g). This indicator is relevant because low birth weight infants are at high risk for health problems. This indicator can also highlight the existence of health disparities.

Report Area	Total Live Births	Low Weight Births (Under 2500g)	Low Weight Births, Percent of Total
Jackson County, WV	2,303	182	7.9%
West Virginia	148,344	13,944	9.4%
United States	29,300,495	2,402,641	8.2%
HP 2020 Target			<= 7.8%

Percent Low Birth Weight Births



- Jackson County, WV (7.9%)
- West Virginia (9.4%)
- United States (8.2%)

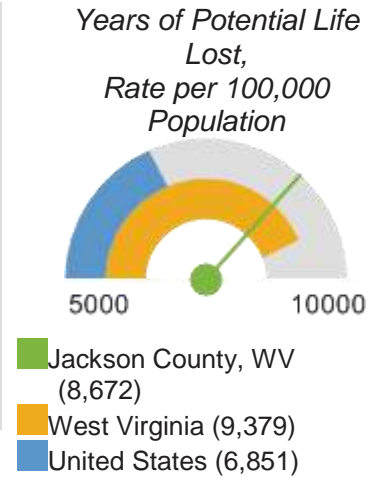
Note: This indicator is compared with the state average.

Data Source: US Department of Health & Human Services, [Health Indicators Warehouse](#). Centers for Disease Control and Prevention, [National Vital Statistics System](#). Accessed via [CDC WONDER](#). 2006-12. Source geography: County

Mortality - Premature Death

This indicator reports Years of Potential Life Lost (YPLL) before age 75 per 100,000 population for all causes of death, age-adjusted to the 2000 standard. YPLL measures premature death and is calculated by subtracting the age of death from the 75 year benchmark. This indicator is relevant because a measure of premature death can provide a unique and comprehensive look at overall health status.

Report Area	Total Population, 2008-2010 Average	Total Premature Deaths, 2008-2010 Average	Total Years of Potential Life Lost, 2008-2010 Average	Years of Potential Life Lost, Rate per 100,000 Population
Jackson County, WV	29,241	142	2,536	8,672
West Virginia	1,855,364	9,854	174,010	9,379
United States	311,616,188	1,074,667	21,327,690	6,851

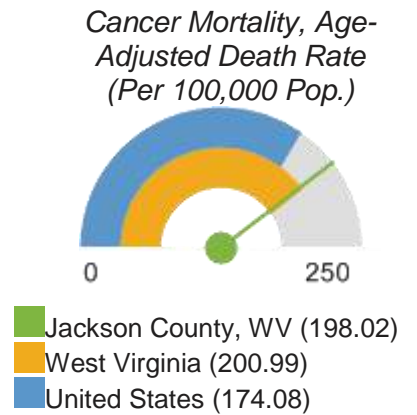


Note: This indicator is compared with the state average.
 Data Source: University of Wisconsin Population Health Institute, [County Health Rankings](#). Centers for Disease Control and Prevention, [National Vital Statistics System](#). Accessed via [CDC WONDER](#). 2008-10. Source geography: County

Mortality - Cancer

This indicator reports the rate of death due to malignant neoplasm (cancer) per 100,000 population. Figures are reported as crude rates, and as rates age-adjusted to year 2000 standard. This indicator is relevant because cancer is a leading cause of death in the United States.

Report Area	Total Population	Average Annual Deaths, 2007-2011	Crude Death Rate (Per 100,000 Pop.)	Age-Adjusted Death Rate (Per 100,000 Pop.)
Jackson County, WV	29,159	77	262.69	198.02
West Virginia	1,846,099	4,710	255.11	200.99
United States	306,486,831	569,481	185.81	174.08
HP 2020 Target				<= 160.6



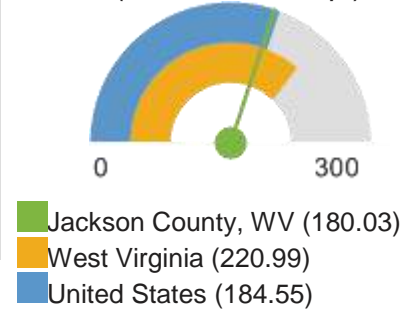
Note: This indicator is compared with the state average.
 Data Source: Centers for Disease Control and Prevention, [National Vital Statistics System](#). Accessed via [CDC WONDER](#). Centers for Disease Control and Prevention, [Wide-Ranging Online Data for Epidemiologic Research](#). 2007-11. Source geography: County

Mortality - Heart Disease

Within the report area the rate of death due to coronary heart disease per 100,000 population is 180.03. Figures are reported as crude rates, and as rates age-adjusted to year 2000 standard. This indicator is relevant because heart disease is a leading cause of death in the United States.

Report Area	Total Population	Average Annual Deaths, 2007-2011	Crude Death Rate (Per 100,000 Pop.)	Age-Adjusted Death Rate (Per 100,000 Pop.)
Jackson County, WV	29,159	66	226.34	180.03
West Virginia	1,846,099	5,064	274.32	220.99
United States	306,486,831	605,315	197.5	184.55

Heart Disease Mortality, Age-Adjusted Death Rate (Per 100,000 Pop.)



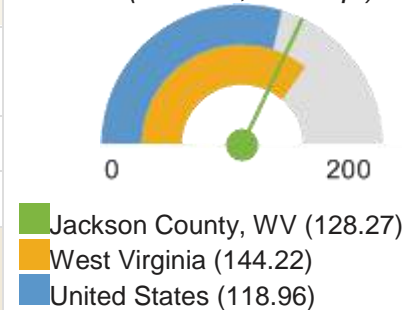
Note: This indicator is compared with the state average.
 Data Source: Centers for Disease Control and Prevention, [National Vital Statistics System](#). Accessed via [CDC WONDER](#). Centers for Disease Control and Prevention, [Wide-Ranging Online Data for Epidemiologic Research](#). 2007-11. Source geography: County

Mortality - Ischemic Heart Disease

Within the report area the rate of death due to coronary heart disease per 100,000 population is 128.27. This rate is greater than the Healthy People 2020 target of less than or equal to 103.4. Figures are reported as crude rates, and as rates age-adjusted to year 2000 standard. This indicator is relevant because heart disease is a leading cause of death in the United States.

Report Area	Total Population	Average Annual Deaths, 2007-2011	Crude Death Rate (Per 100,000 Pop.)	Age-Adjusted Death Rate (Per 100,000 Pop.)
Jackson County, WV	29,159	47	161.18	128.27
West Virginia	1,846,099	3,313	179.44	144.22
United States	306,486,831	390,568	127.43	118.96
HP 2020 Target				<= 103.4

Ischemic Heart Disease Mortality, Age-Adjusted Death Rate (Per 100,000 Pop.)



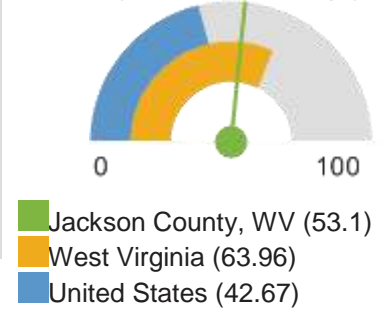
Note: This indicator is compared with the state average.
 Data Source: Centers for Disease Control and Prevention, [National Vital Statistics System](#). Accessed via [CDC WONDER](#). Centers for Disease Control and Prevention, [Wide-Ranging Online Data for Epidemiologic Research](#). 2007-11. Source geography: County

Mortality - Lung Disease

This indicator reports the rate of death due to chronic lower respiratory disease per 100,000 population. Figures are reported as crude rates, and as rates age-adjusted to year 2000 standard. Rates are re summarized for report areas from county level data, only where data is available. This indicator is relevant because lung disease is a leading cause of death in the United States.

Report Area	Total Population	Average Annual Deaths, 2007-2011	Crude Death Rate (Per 100,000 Pop.)	Age-Adjusted Death Rate (Per 100,000 Pop.)
Jackson County, WV	29,159	21	71.33	53.1
West Virginia	1,846,099	1,493	80.86	63.96
United States	306,486,831	137,478	44.86	42.67

Lung Disease Mortality, Age-Adjusted Death Rate (Per 100,000 Pop.)



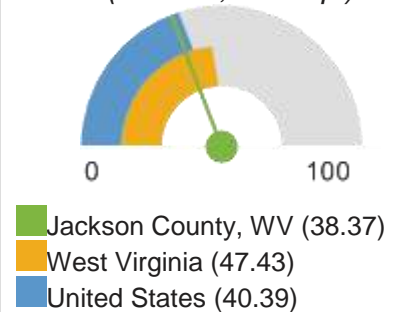
Note: This indicator is compared with the state average.
 Data Source: Centers for Disease Control and Prevention, [National Vital Statistics System](#). Accessed via [CDC WONDER](#). Centers for Disease Control and Prevention, [Wide-Ranging Online Data for Epidemiologic Research](#). 2007-11. Source geography: County

Mortality - Stroke

Within the report area there are an estimated 38.37 deaths due to cerebrovascular disease (stroke) per 100,000 population. This is greater than the Healthy People 2020 target of less than or equal to 33.8. Figures are reported as crude rates, and as rates age-adjusted to year 2000 standard. This indicator is relevant because stroke is a leading cause of death in the United States.

Report Area	Total Population	Average Annual Deaths, 2007-2011	Crude Death Rate (Per 100,000 Pop.)	Age-Adjusted Death Rate (Per 100,000 Pop.)
Jackson County, WV	29,159	14	48.7	38.37
West Virginia	1,846,099	1,087	58.88	47.43
United States	306,486,831	131,470	42.9	40.39
HP 2020 Target				<= 33.8

Stroke Mortality, Age-Adjusted Death Rate (Per 100,000 Pop.)



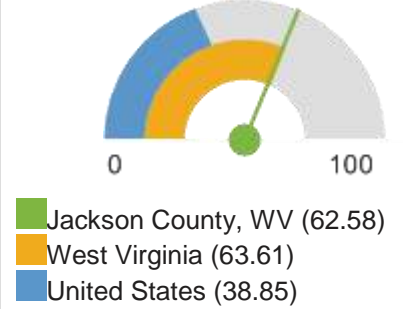
Note: This indicator is compared with the state average.
 Data Source: Centers for Disease Control and Prevention, [National Vital Statistics System](#). Accessed via [CDC WONDER](#). Centers for Disease Control and Prevention, [Wide-Ranging Online Data for Epidemiologic Research](#). 2007-11. Source geography: County

Mortality - Unintentional Injury

This indicator reports the rate of death due to unintentional injury (accident) per 100,000 population. Figures are reported as crude rates, and as rates age-adjusted to year 2000 standard. This indicator is relevant because accidents are a leading cause of death in the U.S.

Report Area	Total Population	Average Annual Deaths, 2007-2011	Crude Death Rate (Per 100,000 Pop.)	Age-Adjusted Death Rate (Per 100,000 Pop.)
Jackson County, WV	29,159	18	61.73	62.58
West Virginia	1,846,099	1,220	66.11	63.61
United States	306,486,831	122,185	39.87	38.85
HP 2020 Target				<= 36.0

Unintentional Injury (Accident) Mortality, Age-Adjusted Death Rate (Per 100,000 Pop.)



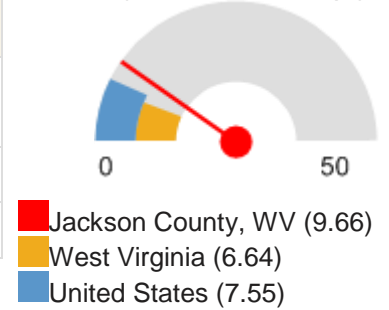
Note: This indicator is compared with the state average.
 Data Source: Centers for Disease Control and Prevention, [National Vital Statistics System](#). Accessed via [CDC WONDER](#). Centers for Disease Control and Prevention, [Wide-Ranging Online Data for Epidemiologic Research](#). 2007-11. Source geography: County

Mortality - Motor Vehicle Accident

This indicator reports the rate of death due to motor vehicle crashes per 100,000 population, which include collisions with another motor vehicle, a non-motorist, a fixed object, and a non-fixed object, an overturn, and any other non-collision. This indicator is relevant because motor vehicle crash deaths are preventable and they are a cause of premature death.

Report Area	Total Population	Average Annual Deaths, 2007-2011	Crude Death Rate (Per 100,000 Pop.)	Age-Adjusted Death Rate (Per 100,000 Pop.)
Jackson County, WV	29,159	2	8.23	9.66
West Virginia	1,846,099	125	6.77	6.64
United States	306,486,831	23,559	7.69	7.55

Motor Vehicle Crash Death, Age-Adjusted Death Rate (Per 100,000 Pop.)



Note: This indicator is compared with the state average.
 Data Source: Centers for Disease Control and Prevention, [National Vital Statistics System](#). Accessed via [CDC WONDER](#). Centers for Disease Control and Prevention, [Wide-Ranging Online Data for Epidemiologic Research](#). 2007-11. Source geography: County

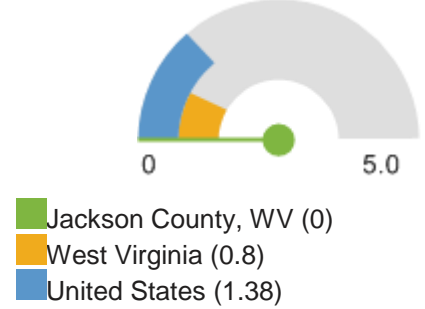
Jackson General Hospital Community Needs Analysis and Action Plan

Mortality - Pedestrian Accident

This indicator reports the rate of pedestrians killed by motor vehicles per 100,000 population. This indicator is relevant because pedestrian-motor vehicle crash deaths are preventable and they are a cause of premature death.

Report Area	Total Deaths, 2008-2010	Average Annual Deaths, 2008-2010	Average Annual Death Rate (Per 100,000 Pop.)
Jackson County, WV	0	0	0
West Virginia	47	15	0.8
United States	12,750	4,250	1.38
HP 2020 Target			<= 1.3

Pedestrian Motor Vehicle Death, Age-Adjusted Death Rate (Per 100,000 Pop.)



Note: This indicator is compared with the state average.

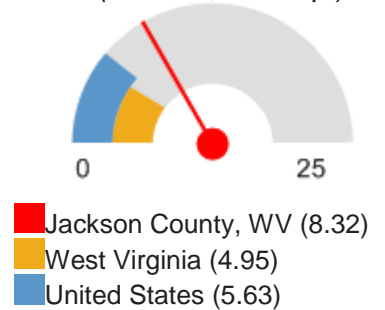
Data Source: US Department of Transportation, National Highway Traffic Safety Administration, [Fatality Analysis Reporting System](#). 2008-10. Source geography: County

Mortality - Homicide

This indicator reports the rate of death due to assault (homicide) per 100,000 population. Figures are reported as crude rates, and as rates age-adjusted to year 2000 standard. Rates are re summarized for report areas from county level data, only where data is available. This indicator is relevant because homicide rate is a measure of poor community safety and is a leading cause of premature death.

Report Area	Total Population	Average Annual Deaths, 2007-2011	Crude Death Rate (Per 100,000 Pop.)	Age-Adjusted Death Rate (Per 100,000 Pop.)
Jackson County, WV	29,159	2	6.86	8.32
West Virginia	1,846,099	87	4.71	4.95
United States	306,486,831	17,097	5.58	5.63
HP 2020 Target				<= 5.5

Homicide, Age-Adjusted Death Rate (Per 100,000 Pop.)



Note: This indicator is compared with the state average.

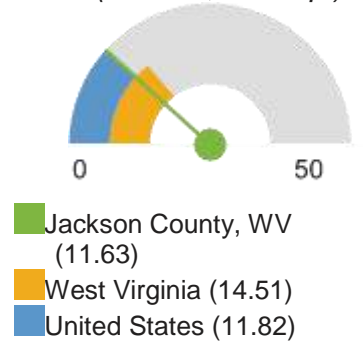
Data Source: Centers for Disease Control and Prevention, [National Vital Statistics System](#). Accessed via [CDC WONDER](#). Centers for Disease Control and Prevention, [Wide-Ranging Online Data for Epidemiologic Research](#). 2007-11. Source geography: County

Mortality - Suicide

This indicator reports the rate of death due to intentional self-harm (suicide) per 100,000 population. Figures are reported as crude rates, and as rates age-adjusted to year 2000 standard. Rates are resummarized for report areas from county level data, only where data is available. This indicator is relevant because suicide is an indicator of poor mental health.

Report Area	Total Population	Average Annual Deaths, 2007-2011	Crude Death Rate (Per 100,000 Pop.)	Age-Adjusted Death Rate (Per 100,000 Pop.)
Jackson County, WV	29,159	3	10.97	11.63
West Virginia	1,846,099	280	15.16	14.51
United States	306,486,831	37,085	12.1	11.82
HP 2020 Target				<= 10.2

Suicide, Age-Adjusted Death Rate (Per 100,000 Pop.)



Note: This indicator is compared with the state average.

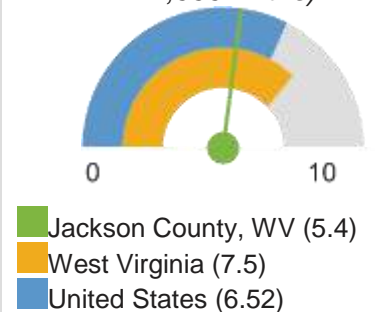
Data Source: Centers for Disease Control and Prevention, [National Vital Statistics System](#). Accessed via [CDC WONDER](#). Centers for Disease Control and Prevention, [Wide-Ranging Online Data for Epidemiologic Research](#). 2007-11. Source geography: County

Infant Mortality

This indicator reports the rate of deaths to infants less than one year of age per 1,000 births. This indicator is relevant because high rates of infant mortality indicate the existence of broader issues pertaining to access to care and maternal and child health.

Report Area	Total Births	Total Infant Deaths	Infant Mortality Rate (Per 1,000 Births)
Jackson County, WV	1,670	9	5.4
West Virginia	104,840	786	7.5
United States	20,913,535	136,369	6.52
HP 2020 Target			<= 6.0

Infant Mortality Rate (Per 1,000 Births)



Note: This indicator is compared with the state average.

Data Source: Centers for Disease Control and Prevention, [National Vital Statistics System](#). Accessed via [CDC WONDER](#). Centers for Disease Control and Prevention, [Wide-Ranging Online Data for Epidemiologic Research](#). 2006-10. Source geography: County

Report prepared by [Community Commons](#), April 2015.

Conclusion

Based on the research and analysis of primary and secondary data, the following health care service issues were identified to be explored as a Local Health Care Initiative:

1. Community Education and Outreach

- a. Primary data analysis and population survey revealed the need for improving community awareness of local health care services. The general population stated they did not know if the following services were available in the community:
 - Treatment for drug and alcohol abuse
 - Tobacco cessation
 - Preventive care/wellness screening (breast health, cardiac health, colon care, diabetes)
 - Care Management Programs – cardiac care, diabetes management, heard disease
 - Treatment for mental health
 - Health care for low-income
 - Health care for seniors
 - Wellness services
 - Treatment for obesity
 - Emergency Preparedness
 - Access to specialty services (general surgery, urology, ENT, cardiology, orthopedic, ophthalmic)
- b. General population cited the lack of local pediatric care as an unmet need although in rural communities, family practice typically cares for both children and adult patients. Pediatric care is also available in surrounding counties.
- c. General population cited the lack of dermatology care as an unmet need as a specialty service.
- d. General population cited a lack of gynecology as specialty service as an unmet need although in rural communities family practice typically provides routine gynecology care/women’s health services.

2. Substance Abuse Treatment

- a. Inpatient facilities are unavailable locally
- b. Long- term post rehabilitation treatment programs are limited
- c. Underage alcohol consumption is high

3. Comprehensive Mental Health Treatment Options (including crisis management and inpatient care)

- a. Outpatient treatment options are limited in local area, especially for low-income or uninsured populations
- b. Inpatient mental health facilities are not available in Jackson County
- c. Key informants and general population cited this as an unmet need
- d. Key informants were very concerned about the care of substance abuse, mental illness, depression, and suicide

4. Non-Emergent Medical Transportation

- a. Key informants and general population cited transportation as a barrier to accessing care especially for certain segments of the population.
- b. Many needed health care services are lacking in the county and people need to travel to larger cities such as Charleston or Parkersburg.
- c. Lack of a comprehensive public transportation system.

Jackson General Hospital Community Needs Analysis and Action Plan

- d. Limited affordable non-emergency transportation available locally, particularly for bed-bound patients.

5. Provider Education and Outreach

- a. Key informants and general population cited concern about the number of local providers accepting new patients and the availability of care for children by a pediatrician as a reason for leaving local community for health care services.
- b. Provider education regarding health screening, treatment of depression, and suicide prevention may help to improve key informant and general population’s satisfaction with communities’ response to these issues.

The following health care service issues were identified to be explored during the next phase of a Local Health Care Initiative:

Summary of Unmet and Partially Met Needs –

Area of Need	Resources	Unmet Need	Strategy
Substance abuse/addiction and mental health services	Westbrook, Inc., BOMAR group, River Valley Health and Wellness	Mental Health Providers	Recruit providers (Nurses, MLPs, MD) Partner with larger system for Addictions Management Program
Pediatrics	Two med-pediatrics physicians in the county	Pediatrician	Recruit pediatrician
OB/GYN services	Jackson County Health Department, MHHC, River Valley Health and Wellness	Women’s Health Care Provider Outreach Education	Coordinate with regional providers to offer local prenatal care
Podiatry	Local Primary Care Providers	Podiatry	Partner for podiatrist coverage within community
Weight management programs	Local physicians Weight Watcher’s online	Outreach weight management clinics obesity support	Development of weight management programs Development of wellness programs
Tobacco cessation programs	Local physicians, Jackson General Hospital smoking cessation education, Jackson County Health Department	Outreach Education	Develop smoking cessation programs with continuing support
Services for seniors	Jackson County Commission on Aging, Loved Ones, Home Health agencies, Ravenswood Care Center, the Caring Place	Outreach Timely referrals to appropriate agencies Adult Day Care Center availability	Implement adult daycare Improve private duty sitter options

Jackson General Hospital Community Needs Analysis and Action Plan

Area of Need	Resources	Unmet Need	Strategy
Insurance issues (not having insurance or not being accepted locally)	CHIP program, insurance exchange in preparation for healthcare reform, charity care programs, sliding fee schedules	Outreach Education Assistance with application process	Collaborate with local resources to establish a resource connection to coordinate care. Assist patients with information about insurance qualifications, costs, etc. Work with state authorities to assist people to apply for health insurance through health exchanges
Lack of affordable non-emergent transportation for medical care, particularly for home bound individuals	Fee for service EMS services, Commission on Aging bus, Little Kanawha Bus	Outreach Additional non-emergent transport services	Coordinate with local citizens to develop a transportation system affordable to Jackson County Citizens
Emergency preparedness	Jackson County Health Department Jackson County EMS Jackson General Hospital	Outreach	Coordinate with local authorities to provide education to the community Create and distribute emergency preparedness checklists Create and distribute emergency preparedness kits

Action Steps: After discussing the results of the health care needs assessment, a consensus of priorities for action and determination of next steps was accomplished. The following gaps in health service were identified as a “priority” (these are not ranked by importance):

- Outreach to Community and Providers
- Substance Abuse Education and Treatment
- Mental Health Services
- OB/GYN Education about the availability of prenatal care/birth control
- Promotion of Women’s Health
- Non-emergent Medical Transportation
- Education about the availability of specialty care (pediatric, gynecology, orthopedic, cardiology, mental health, gastroenterology, dermatology, urology, endocrinology)
- Support of Senior Services for aging population
- Uninsured and Underinsured Populations in the Community

Educating the community and providers about available resources and coordination of such resources is critical to the strategic planning process. Strategies for accomplishing these very important steps:

- Development of a steering committee or similar group to guide the process and provide sustainability
- Development of a community resources/navigator for health services coordination and education
- Development of materials to support education
- Development of grant opportunities to support education and coordination of resources

Jackson General Hospital Community Needs Analysis and Action Plan

Establishment of a multidisciplinary advisory group to further develop and implement solutions to identified gaps in health care services will be initiated.

Conclusion: The community health care needs assessment process is invaluable for the following reasons:

- Gained information about gaps in both services and knowledge of services
- Provided secondary data that supports survey findings, anecdotal perceptions, and demographic considerations regarding services needed
- Provided the necessary impetus for change
- Provided community awareness and a collective sense of purpose to serve the region's citizens
- Provided a much needed forum to express the current concerns
- Provided an interpretation related to other regions in relation to this region's needs
- Provided structure to a complicated process

Jackson General Hospital Community Needs Analysis and Action Plan

SURVEY RESULTS Jackson General Hospital Jackson County, WV

Q1 In what ZIP code is your home located? (enter 5-digit ZIP code; for example, 00544 or 94305)

Cottageville	9%	Leroy	2%
Evans	6%	Millwood	4%
Gay	2%	Ravenswood	21%
Given	2%	Ripley	36%
Kenna	5%	Sandyville	7%
Other	6%		

Answered: 312 Skipped: 0

Q2 Have you or someone in your household used the services of a hospital in the past 24 months?

Answered: 312 Skipped: 0

Answer Choices	Responses
Yes	77.56% 242
No (Skip to Q11)	21.47% 67
Don't know (Skip to Q11)	0.96% 3
Total	312

Q3 At which hospital(s) were services received?

Answered: 247 Skipped: 65

Answer Choices	Responses
Jackson General Hospital (Skip to Q5)	85.43% 211
Other (please specify)	14.57% 36

St. Mary's Huntington	1
Camden Clark, Parkersburg	12
Cabell Huntington	3
CAMC, Charleston	4
Womens & Children	1
Cleveland Clinic	1
Holzer Medical	3
Pleasant Valley	2
St. Thomas	1
VA Hospital	2

Jackson General Hospital Community Needs Analysis and Action Plan

Q4 You responded that you or someone in your household received care at a hospital other than Jackson General Hospital. Why did you or your family member choose that/those hospital(s)?

Answer Choices	Responses	
Physician referral	36.43%	51
Closer, more convenient	33.57%	47
Insurance	7.14%	10
Quality of care/lack of confidence	12.14%	17
Availability of specialty care	20.00%	28
Other (please specify)	15.00%	21
Total Respondents: 140		

Q5 What hospital service(s) were used at Jackson General Hospital?

Answered: 244 Skipped: 68

Answer Choices	Responses	
Radiological imaging (X-ray, MRI, CT scan, ultrasound, mammogram)	55.33%	135
Laboratory	58.61%	143
Other outpatient services (Surgery)	12.30%	30
Physician services	24.59%	60
Rural health clinics	17.62%	43
Inpatient services	9.02%	22
Emergency room (ER)	38.52%	94
Oncology	0.82%	2
Other (please specify)	3.28%	8
Total Respondents: 244		

Jackson General Hospital Community Needs Analysis and Action Plan

Q6 How satisfied were you or someone in your household with the services you received at Jackson General Hospital? Would you say you were:

Answered: 245 Skipped: 67

Answer Choices	Responses	
Satisfied	88.57%	217
Dissatisfied	4.90%	12
Don't know	6.53%	16
Total		245

Q7 Why were you satisfied/dissatisfied with the care received at Jackson General Hospital?

Answered: 233 Skipped: 79

Positive

Kind, caring, friendly, nice, good staff
Convenient, close to home
Short wait, quick service
Providers knowledgeable, helpful,

Negative

Excessive waiting
Poor bedside manner
Slow registration
Repeat visits

Jackson General Hospital Community Needs Analysis and Action Plan

Q8 What type of specialist have you or someone in your household been to and in which city did you receive that care?

Answered: 247 Skipped: 65

Answer Choices	Responses	
No specialty care received (Skip to Q11)	35.63%	88
Cardiology/Heart, Please list location in OTHER field	20.65%	51
Orthopedics/Orthopedic surgery, Please list location in OTHER field	20.24%	50
Urology, Please list location in OTHER field	12.55%	31
Obstetrics/Gynecology, Please list location in OTHER field	18.62%	46
General surgery, Please list location in OTHER field	12.55%	31
Other (please specify)	11.74%	29

Women's Health	3
Neurology	2
Oncology	2
Dermatology	2
Kidney	1
Gastro	3
Endocrinologist	2
Peds	2
ENT	2
Charleston	2
Parkersburg	4
Huntington	2
Pt. Pleasant	1
Morgantown	1
Cleveland Clinic	1

Total Respondents: 247

Jackson General Hospital Community Needs Analysis and Action Plan

Q9 Did the specialist request further testing, laboratory work and/or x-rays?

Answered: 239 Skipped: 73

Answer Choices	Responses	
Yes	41.42%	99
No (Skip to Q11)	53.14%	127
Don't know (Skip to Q11)	5.44%	13
Total		239

Q10 If yes, in which city were the tests or laboratory work performed?

Answered: 79 Skipped: 233

Ripley	29
Charleston	20
Parkersburg	10
Huntington	3
Pt. Pleasant	3
Morgantown	2
Cleveland Clinic	1
Spencer	1
Millwood	2
Gallipolis OH	2
Marietta OH	1

Jackson General Hospital Community Needs Analysis and Action Plan

Q11 What kind of medical provider do you use for routine care?

Answered: 312 Skipped: 0

Answer Choices	Responses
Community Health Center	14.42% 45
Health Department	4.81% 15
Primary Care Physician	63.78% 199
Emergency room/Hospital	9.29% 29
Rural Health Clinic	9.94% 31
Specialist	5.77% 18
Other (please specify)	6.09% 19
Total Respondents: 312	

Q12 Have you or someone else in your household been to a Primary care (family) doctor, physician assistant or nurse practitioner in Jackson County?

Answered: 312 Skipped: 0

Answer Choices	Responses
Yes	62.18% 194
No (Skip to Q16)	34.62% 108
Don't know (Skip to Q16)	3.21% 10
Total	312

Jackson General Hospital Community Needs Analysis and Action Plan

Q13 How satisfied were you or someone in your household with the quality of physician care (or physician assistant or nurse practitioner care) received in Jackson County? Would you say you were:

Answered: 205 Skipped: 107

Answer Choices	Responses	
Satisfied	93.17%	191
Dissatisfied	1.95%	4
Don't know	4.88%	10
Total		205

Q14 Why were you satisfied/dissatisfied with the quality of physician care (or physician assistant or nurse practitioner care)?

Positive

Availability, Local, Convenient, Close	9
Caring, Efficient, Good Care, Knowledgeable	48
Listens, Thorough, Trust	18
Friendly, Kind, Quick Service	9
Overall Service	23

Negative

Trust	1
Don't listen	1
Long Wait Time	1
Not good with follow ups	1
Rude	1

Answered: 193 Skipped: 119

The majority of responders indicated they were satisfied with the quality of provider care

Jackson General Hospital Community Needs Analysis and Action Plan

Q15 Are you able to get an appointment with your primary care (family) doctor, physician assistant or nurse practitioner in the service area of Jackson General Hospital when you need one?

Answered: 210 Skipped: 102

Answer Choices	Responses	
Yes	86.67%	182
No	6.19%	13
Don't know	7.14%	15
Total		210

Q16 Have you or someone in your household delayed health care due to lack of money and/or insurance?

Answered: 312 Skipped: 0

Answer Choices	Responses	
Yes	16.67%	52
No	79.17%	247
Don't know	4.17%	13
Total		312

Q17 What concerns you most about health care in the service area of Jackson General Hospital?

Answered: 312 Skipped: 0

Affordable Healthcare	8
Maintaining Providers/New Providers	50
Availability and Wait time	7
Quality of Care	28
ER Concerns	9
Other non-specific comments	32
No comment	10

Jackson General Hospital Community Needs Analysis and Action Plan

Q18 What services would you like to see offered at Jackson General Hospital?

Answered: 312 Skipped: 0

OB/GYN	41
Dermatology	9
General Practice/Family Practice	4
Pediatrics	24
Plastics	2
Orthopedics	3
Additions, Substance Abuse, Psych	4
Neuro	2
Cardio/Pulmonology	5
Eye Care	2
PT	2
Dialysis	1
Hearing	1
None Specified	55

Q19 Do you have any kind of healthcare coverage, such as health insurance through an employer or a government plan such as Medicare?

Answered: 312 Skipped: 0

Answer Choices	Responses
Yes	88.46% 276
No	11.54% 36
Total	312

Appendix A – Community Health Care Services Inventory

Health Service	Ripley, WV	Ravenswood, WV	Other (provider also has office location(s) outside of Jackson County)
Internal Medicine			
James G. Gaal, DO	X		
I. John Snyder, DO	X		
Arif Malik, MD	X		
Theresa Simon, MD	X		
Family Practice			
Craig Swann, DO	X		
Pediatrics			
Billie Toler, DO	X		
General Surgery			
Jeffrey Barton, DO	X		
Carl Overmiller, MD	X		
Urology			
Shrikant Vaidya, MD	X		X
Orthopedics			
Stephen Miller, MD	X		X
Gregory Krivchenia, MD	X		X
Cardiology			
Parkersburg Cardiology Group			X
ENT			
John Wade, MD	X		X
Ophthalmology			
Jeff Sinclair	X		X
Obstetrics/Gynecology			
Curtis White, MD			X
Nephrology			
Abdul R. Zanabali, MD	X		X
Clinics			
Morad Hughes Health Center	X		
River Valley Health & Wellness Center	X		
Jackson General Hospital Clinic at Wal-Mart	X		

Jackson General Hospital Community Needs Analysis and Action Plan

Mental Health/Counseling/Substance Abuse			
Westbrook	X		X
Schwabe & Associates			X
Health Departments			
Jackson County Health Department	X		
Nursing Homes			
Eldercare	X		
Ravenswood Village	X		
JGH Swing Beds	X		
Ambulance/Transport			
Jackson County EMS	X	X	
HealthNet Ground Transport	X	X	
Jan Care Ambulance	X		X
Physical Therapy			
Jackson General Hospital	X	X	
Physical Therapy Providers			
Mountain River Physical Therapy	X		X
Chiropractic Care			
George Chiropractic Clinic PLLC	X		
Ravenswood Chiropractic Center		X	
Home Health			
Jackson County Home Health Agency	X		
Amedysis Home Health	X		
Assisted Living Facility			
Ravenswood Care Center			
Hospice			
Kanawha Valley Hospice		X	
House Calls Hospice	X		
Eye Care (optometry)			
Donald King, O.D.	X		
Keith King, O.D.	X		
Dr. Ben Mize		X	
Dr. Christine Mize		X	
Dental Care			
Family & Cosmetic Dentistry		X	X
R. B. Hunt DDS		X	X
Meegan Hunt DDS	X		
Thomas H Layne II DDS	X		
Theodore R Motes, DDS	X		

Jackson General Hospital Community Needs Analysis and Action Plan

Dawn Myers, DDS	X		
Helen Dee Rymer, DDS		X	
Edward Smith DDS	X		
William J Stumbo DDS MS	X		X
Nathan Walls, DDS	X		
Daniel O. Whyte DDS	X		

REFERENCES

(WV-Kaiser State Health Facts)

(quickfacts.census.gov, 2013)

(USDA Economic Research, WV State Facts, 2013)

(County Health Rankings Organization)

(West Virginia Health Statistics Center)

Centers for Disease Control and Prevention, [National Vital Statistics System](#).

Centers for Disease Control and Prevention, [Wide-Ranging Online Data for Epidemiologic Research](#). 2007-11. Source geography: County

Healthypeople.gov

National Institutes of Health, National Cancer Institute, [Surveillance, Epidemiology, and End Results Program. State Cancer Profiles](#). 2007-11. Source geography: County

Centers for Disease Control and Prevention, [Behavioral Risk Factor Surveillance System](#). Accessed via the [Health Indicators Warehouse](#). US Department of Health & Human Services, [Health Indicators Warehouse](#). 2006-12. Source geography: County

Centers for Disease Control and Prevention, [National Center for Chronic Disease Prevention and Health Promotion](#). 2012. Source geography: County

Centers for Disease Control and Prevention, [Behavioral Risk Factor Surveillance System](#). Additional data analysis by [CARES](#). 2011-12. Source geography: County

[Centers for Medicare and Medicaid Services](#). 2012. Source geography: County

US Department of Health & Human Services, [Health Indicators Warehouse](#). Centers for Disease Control and Prevention, [National Center for HIV/AIDS, Viral Hepatitis, STD, and TB Prevention](#). 2012. Source geography: County

US Department of Transportation, National Highway Traffic Safety Administration, [Fatality Analysis Reporting System](#). 2008-10. Source geography: County

Centers for Disease Control and Prevention, [National Vital Statistics System](#). Accessed via [CDC WONDER](#). Centers for Disease Control and Prevention, [Wide-Ranging Online Data for Epidemiologic Research](#). 2007-11. Source geography: County

National Institutes of Health, National Cancer Institute, [Surveillance, Epidemiology, and End Results Program. State Cancer Profiles](#). 2007-11. Source geography: County